

Automatic tube filling and sealing machines



# S 400 PRIMA



P R O D U C T I O N

Up to 4,200 pieces/hour for metal tubes  
Up to 3,200 pieces/hour for polyethylene and laminate tubes



# S 400 PRIMA



## PRODUCTION

units/hour for metal tubes up to **4,200**

units/hour for Polyethylene, Polyfoil or Laminate tubes up to **3,200**

Descriptions and pictures of this brochure are given for information only and can be modified without prior notice.

# Technical Characteristics

TUBE DIMENSIONS		Metal	Plastic
-----------------	--	-------	---------

Diameter	mm	min-max <b>10-42</b>	min-max <b>10-50 (60)</b>
Length	mm	<b>50-235</b>	<b>50-235</b>

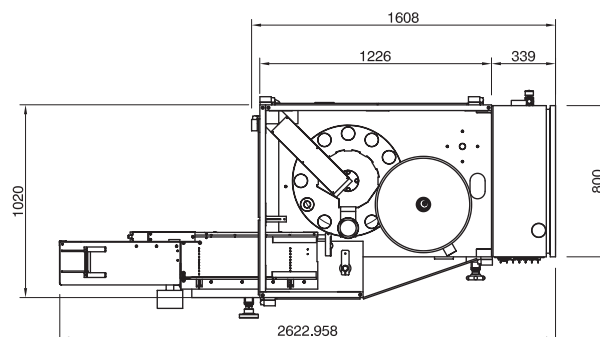
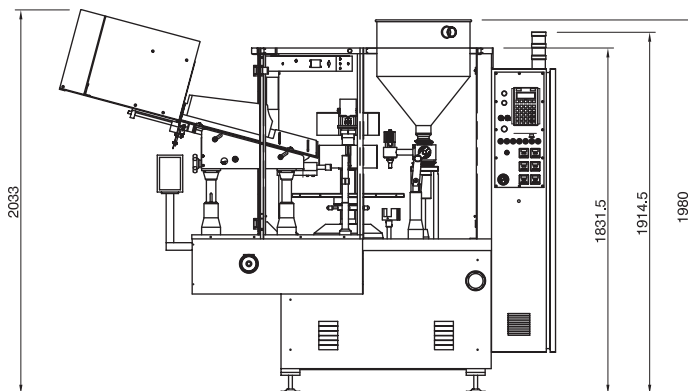
Power	kW	<b>2</b>	<b>5,5</b>
-------	----	----------	------------

CONSUMPTION			
-------------	--	--	--

Water	l/min	-	<b>2</b>
-------	-------	---	----------

Air	l/min	<b>150</b>	<b>250</b>
-----	-------	------------	------------

Output/hour	up to	<b>4200</b>	<b>3200</b>
-------------	-------	-------------	-------------



TGM - TECNOMACHINES s.r.l.



**Emrich**  
INDUSTRIES  
PIY LTD

[www.emrich.com.au](http://www.emrich.com.au)

[sales@emrich.com.au](mailto:sales@emrich.com.au)

Ph: 03-95400255